

## NIBE™ SOLAR NO COIL FP215 P / PL

NIBE premium solar packages

for boilers and tanks without an internal solar coil

NEW



### Features of NIBE Solar NO COIL FP215 P / PL

**Solar system designed to perform well with almost every storage tank without an internal solar coil.**

**High-capacity external heat exchanger in an easy-to-mount design.**

**Lightweight, high-efficiency panels.**

**Easy-to-handle panels with quick connections.**

### NIBE Solar NO COIL FP215 P / PL

The P (Premium) panel is mounted vertically.

The PL (Premium Landscape) is mounted horizontally.

The solar pump station has a low-energy solar pump, de-aerator, thermometers, adjusting valve, safety valve, pressure gauge, isolating valves and double check valves.

Also included are a solar expansion vessel and a wall bracket with a two-way check valve for easy servicing.

All necessary sensors are included.

This system will enable you to enjoy free energy from the sun for many years.

We wish you a sunny future!

# Technical specifications

## NIBE™ FP215 P / PL Solar panel

Solar panel		FP215 P	FP215 PL
Article number		057001	057002
Dimensions	mm	2088 x 1030 x 81	
Gross area	m <sup>2</sup>	2.15	
Aperture area	m <sup>2</sup>	1.91	
Glass thickness	mm	3.2	
Glass structure		Low-iron, tempered solar safety glass	
Collecting pipe diameter	mm	22	
Serpentine tube diameter	mm	10	
Weight	kg	32.5	33
Collector frame		black anodized	
Absorber type		serpentine pipe, Blue highly selective absorber coating	
Optical efficiency	%	80.6	82.3
Top insulation		20 mm mineral wool	
Bottom insulation		20 mm PIR sandwich insulation	
Filling volume	litres	1.65	2.32
Heat transfer medium		Propylene glycol or water in drain-back applications	
Maximum operating pressure	bar/MPa	10	
Maximum stagnation temperature	°C <sup>1)</sup>	191.2	

1) At an irradiation of 1000 W/m<sup>2</sup> and 30 °C ambient temperature

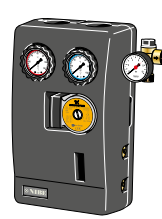
### Recommended accessories, not included

- \*\* Roof fixing details for different types of roofs
- \*\* Preinsulated flexible solar pipes, easy to split and including sensor cable, 10, 15, 20 or 25 metres
- \*\* Roof penetration unit

### \* Main Solar components included in the solar package



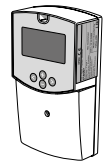
NIBE Solar Panels  
NIBE Solar FP215 P / PL  
\* Art no 057001 (P)  
\* Art no 057002 (PL)  
(2 - 6 pcs)



NIBE Solar pump station  
SPS20  
\* Art no 057038  
(1 Pcs)



NIBE Solar heat  
exchanger  
SHE10  
\* Art no 057028  
(1 Pcs)



NIBE Solar  
Controller unit  
SCU10  
\* Art no 518467  
(1 Pcs)

### Other components included in this solar package are:

Expansion vessel, quick fittings / compensators, solar glycol.

### NIBE Solar packages:

NIBE Solar NO COIL FP215 P2 package	art no 06974
NIBE Solar NO COIL FP215 P3 package	art no 069072
NIBE Solar NO COIL FP215 P4 package	art no 057166
NIBE Solar NO COIL FP215 P5 package	art no 057167
NIBE Solar NO COIL FP215 P6 package	art no 057168
NIBE Solar NO COIL FP215 PL2 package	art no 057169
NIBE Solar NO COIL FP215 PL3 package	art no 057170
NIBE Solar NO COIL FP215 PL4 package	art no 057171
NIBE Solar NO COIL FP215 PL5 package	art no 057172
NIBE Solar NO COIL FP215 PL6 package	art no 057173

Our guidance for this system is:

At 2 m<sup>2</sup> collector/person = 175 l tank/person

At 1 m<sup>2</sup> collector/person = about 75 l tank/person

For more detailed information go to the installers solar guide at [www.nibe.eu](http://www.nibe.eu)

### Example of hydraulic principle

