

NIBE™ SOLAR 1145/VPAS FP215 P / PL

NIBE premium solar packages

for NIBE F1145 heat pump and NIBE VPAS storage tank

NEW



Features of NIBE Solar 1145/VPAS FP215 P / PL

Solar system tailored for optimum performance with the NIBE F1145 ground source heat pump combined with the VPAS storage tank.

Lightweight, high-efficiency panels.

Easy-to-handle panels with quick connections.

Solar control is provided by the heat pump controller, providing an integrated control system.

Solar functions and temperatures are also accessible in the same way as other functions via the remote control accessory (SMS 40).

NIBE Solar 1145/VPAS FP215 P / PL

The P (Premium) panel is mounted vertically. The PL (Premium Landscape) is mounted horizontally.

The solar pump station has a low-energy solar pump, de-aerator, thermometers, adjusting valve, safety valve, pressure gauge, isolating valves and double check valves.

Also included are a solar expansion vessel and a wall bracket with a two-way check valve for easy servicing.

This hydraulic principle with the 1145 heat pump and the VPAS tank will give you outstanding function and performance from both the heat pump and the solar system.

Both hot tap water and domestic heating use solar energy preferentially, and the heat pump if necessary.

Built-in "buffer-tank" function evens out the heat pump's on /off cycles. The "buffer-tank" function also enables an oversized heat pump to be installed in a standard house, if this is preferred.

This system will also produce plenty of hot tap water.

This system will enable you to enjoy free energy from the sun for many years.

We wish you a sunny future!

Technical specifications

NIBE™ FP215 P / PL Solar panel

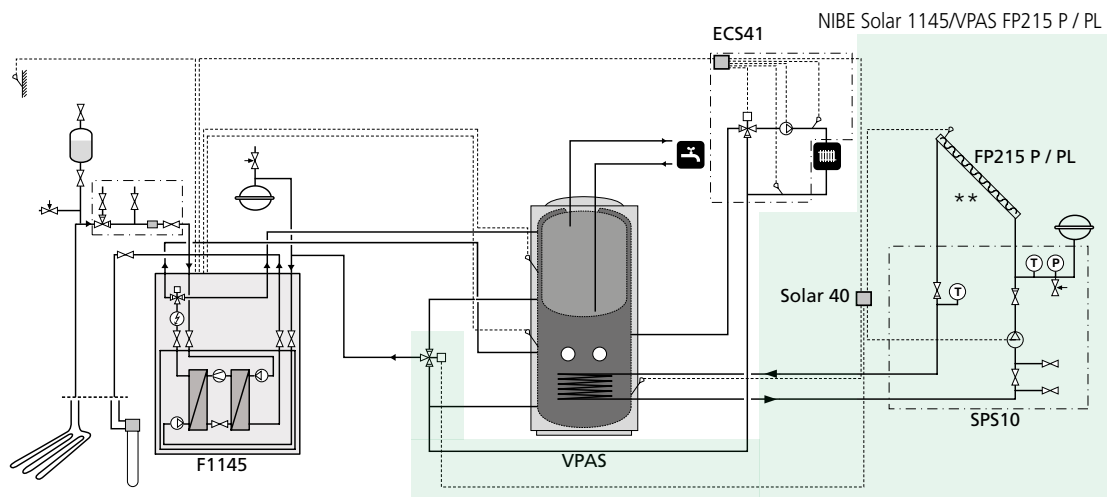
Solar panel		FP215 P	FP215 PL
Article number		057001	057002
Dimensions	mm	2088 x 1030 x 81	
Gross area	m ²	2.15	
Aperture area	m ²	1.91	
Glass thickness	mm	3.2	
Glass structure		Low-iron, tempered solar safety glass	
Collecting pipe diameter	mm	22	
Serpentine tube diameter	mm	10	
Weight	kg	32.5	33
Collector frame		black anodized	
Absorber type		serpentine pipe, Blue highly selective absorber coating	
Optical efficiency	%	80.6	82.3
Top insulation		20 mm mineral wool	
Bottom insulation		20 mm PIR sandwich insulation	
Filling volume	litres	1.65	2.32
Heat transfer medium		Propylene glycol or water in drain-back applications	
Maximum operating pressure	bar/MPa	10	
Maximum stagnation temperature	°C ¹⁾	191.2	

1) At an irradiation of 1000 W/m² and 30 °C ambient temperature

Recommended accessories, not included

- ** Roof fixing details for different types of roofs
- ** Preinsulated flexible solar pipes, easy to split and including sensor cable, 10, 15, 20 or 25 metres
- ** Roof penetration unit

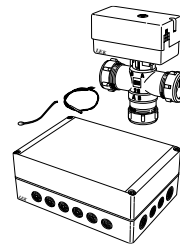
Hydraulic principle for NIBE Solar F1145/VPAS FP215 P / PL



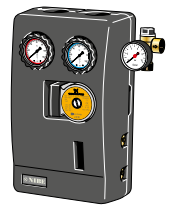
* Main Solar components included in the solar package



NIBE Solar Panels
NIBE Solar FP215 P / PL
*Art no 057001 (P)
*Art no 057002 (PL)
(3 – 5 pcs)



NIBE Solar control adaptor
Solar 40
*Art no 067084
(1 Pcs)



NIBE Solar pump station
SPS10
*Art no 057027
(1 Pcs)

Other components included in this solar package are:

Expansion vessel, quick fittings / compensators, solar glycol.

NIBE Solar packages:

NIBE Solar 1145/VPAS FP215 P3 package	art no 069061
NIBE Solar 1145/VPAS FP215 P4 package	art no 069062
NIBE Solar 1145/VPAS FP215 P5 package	art no 069064
NIBE Solar 1145/VPAS FP215 PL3 package	art no 069065
NIBE Solar 1145/VPAS FP215 PL4 package	art no 069066
NIBE Solar 1145/VPAS FP215 PL5 package	art no 069067

Our guidance for this system is:

2 – 3 persons = 3 panels, 3 – 5 persons = 4 – 5 panels

For more detailed information go to the installers solar guide at www.nibe.eu